



香港城市大學  
City University of Hong Kong



香港城市大學  
City University of Hong Kong

# Global Work Attachment Programme

by

Career and Leadership Centre  
Student Development Services  
City University of Hong Kong

Get in touch and  
be part of GWAP!

General Enquiries  
✉ [clc.careercentre@cityu.edu.hk](mailto:clc.careercentre@cityu.edu.hk)  
☎ +852 3442 5591

For more details,  
please visit:  
[www.cityu.edu.hk/clc](http://www.cityu.edu.hk/clc)

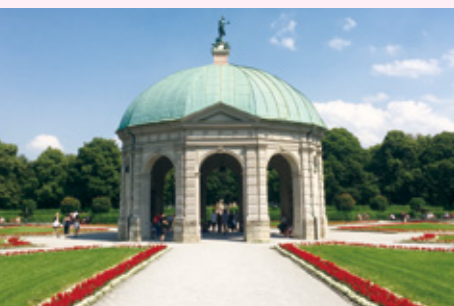


# Global Work Attachment Programme

by Career and Leadership Centre  
Student Development Services



# Global Work Attachment Programme



## Contents

About CityU	04
Message from Vice-President (Student Affairs)	05
Introduction of GWAP	06
Programme Highlights and Employers' Feedback	
Berlin & Munich	08
Sydney	15
Shanghai	22
Taipei	26
Tokyo & Hokkaido	30
Acknowledgements	34

Publisher:  
Office of the Vice-President (Student Affairs)

Editors-in-chief:  
Professor Horace Ip, Vice-President (Student Affairs)  
Dr Tim Wong, Director of Student Development Services

Executive Editors:  
Ms Alice Kirkwood, Section Head of Career and Leadership Centre  
Ms Jacqueline Cheung, Counsellor (Career)  
Ms Genette Cheung, Executive Officer  
Ms Sandra Li, Executive Officer  
Ms Serena Wan, Executive Officer



# About City University of Hong Kong



City University of Hong Kong (CityU) is a dynamic, fast-growing university that is pursuing excellence in research and professional education.

In recent years, CityU has performed strongly in university rankings and is currently among the top 21 in Asia and the top 52 in the world.\* Our academic expertise covers a wide spectrum of sectors, ranging from business, creative media, humanities and social sciences, law to sciences, veterinary medicine and life sciences, data science, engineering, energy and environment.

As a thriving and technology inclined university, CityU has established itself as one of the most innovative and proactive universities in Asia. CityU is widely known for its interactive and IT-based methodologies in teaching and academic work, through which students acquire comprehensive knowledge in their chosen subjects.

With the goal to nurture well-rounded graduates with applicable professional knowledge, personal qualities and employability skills, CityU continues to learn, teach, innovate and prosper.

\*According to Quacquarelli Symonds (QS) World University Rankings

# Message from Vice-President (Student Affairs)

With the aims to encourage students to broaden their international outlook and develop inter-cultural communication skills, the Global Work Attachment Programme (GWAP) was launched in 2015 to provide a unique platform for students to venture beyond Hong Kong and acquire overseas work experience.

To date, close to 300 students have enjoyed this special global experience in a wide array of industries and sectors, opening their minds as they discover the culture, history and latest development of the regions where they lived and worked in. It is also exciting to see that the number of internship opportunities offered to CityU students has been rising since the programme's inauguration.

I would like to take this opportunity to convey my heartfelt appreciation to our internship partners around the world – without your support, the programme would not have been so successful for the benefits of CityU students.

To students who have the privilege to work in such dynamic multi-cultural environments, I hope this experience has better prepared and equipped you for upcoming challenges, both personally and professionally.

This booklet highlights vividly the participants' fruitful learning experience and their exploration of global cultures and workplace etiquettes. I am confident that it would serve as both encouragement and inspiration for students who aspire to take part in GWAP in the near future.

Let us share the delightful moments created by our GWAP Interns and our host partners in this booklet!

Professor Horace Ip  
Vice-President (Student Affairs)  
City University of Hong Kong

# About Global Work Attachment Programme (GWAP)

GWAP selects students by their professional knowledge and readiness for work, with a preference for those who possess strong communication skills and distinctive personal qualities.

After initial screening by CLC and in-depth interviews by internship partners, students from different academic disciplines would be sent to various international cities including Berlin, Munich, Hokkaido, Tokyo, Shanghai, Sydney and Taipei for placements of 8 – 12 weeks.

## QUICK FACTS

Organised by  
**Career and Leadership Centre (CLC)**

Launched in  
**2015**

Engaging  
**158**  
internship partners since inception

**295**  
students completed overseas internships under GWAP

GWAP enhances students'

**GLOBAL PERSPECTIVES, INTERCULTURAL AWARENESS and OVERALL EMPLOYABILITY**

through interactions with people from different ethnic and business backgrounds

THE JOURNEY STARTS HERE!



**JANUARY**

Online Application



**JANUARY - FEBRUARY**

Admission Interview



**FEBRUARY**

CV & Interview Skills Workshops



**MARCH**

Screening and Selection by Internship Partners



**MARCH - APRIL**

Internship Offer Announcement



**MAY**

Pre-Internship Training



**MAY - AUGUST**

Ready to go for a **GLOBAL PLACEMENT** for 8 – 12 weeks

# Global Work Attachment Programme

# Berlin & Munich

## LIST OF 2018 INTERNSHIP PARTNERS AND INTERNS

### BERLIN:

#### ► Copytrack GmbH

Lam Yin Sze Catherine, *Law*  
Sio Kam Ian Kimberly, *Creative Media*

#### ► Lesara AG

Au Lok Yiu Crystal, *Public Policy & Politics*  
Chan Wing Fung Eric, *Accountancy*  
Chen Zijie Zack, *Finance*  
Hung Hiu Ki Vicky, *Management*  
So Hiu Ying Jacqueline, *Total Quality Engineering*  
Wan Chun Wa Sheryl, *Accountancy*  
Wang Rui Kelly, *Business Economics*  
Wu Shi Yu Krystal, *English Studies*  
Xu Shuang Joann, *China Business*

#### ► SomoS

Chan Suet Ying Yolanda, *Chinese & History*  
Soo Hon Ling Zoe, *New Media*

#### ► Tandem

Rajput Mehr, *Creative Media*  
Wong Ching Katherine, *Marketing*

### MUNICH:

#### ► AVIAREPS AG

Chu Yee Tung Amy, *Public Policy & Politics*  
Tam Hoi Kei Rachel, *Media & Communication*

#### ► Dr Kaske Marketing Agency

Ding Linli Ellen, *Global Business Systems Management*  
Poon Chun Yin Adrian, *Psychology*

#### ► HeroBakery GmbH

Chang Wan Chiao Joanne, *Business Economics*

#### ► Lucy Turpin Communications

Chan Yan Tung Janie, *English Studies*  
Chu Lok Hang Freya, *Media & Communication*



▲ Wong Ching Katherine,  
*Tandem*



▲ Chan Yan Tung Janie, *Lucy Turpin Communications*

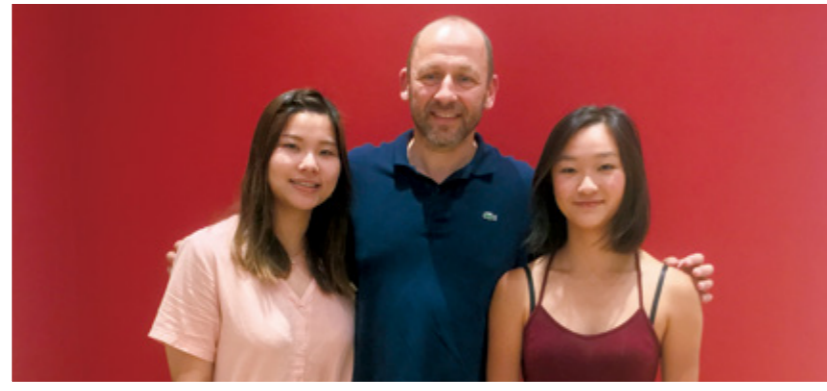
Discuss, brainstorm,  
put forward your ideas -  
ideas from interns  
are always valued in  
Germany.



▲ Rajput Mehr, *Tandem*



# Words From Employers



“

Janie Chan (on the right) is close to the maximum rating, or perhaps even at the maximum rating, in areas like professional attitude, responsibility, interpersonal skills and punctuality. She understands quickly what the topics and challenges are, is very attentive, always ready to help, and always interested in what we are doing.

”

- Mr Hahnel, Lucy Turpin Communications



Always DOUBLE UP the FUN travelling with your buddies.



Soo Hon Ling Zoe, SomoS ▲



Let's do an interview with the in-house artist...from setting up the interview to video-editing, you are fully involved.



How awesome it is to work in such a cool office with a vastly international team?!







Xu Shuang Joann, **Lesara AG** ▲



Chang Wan Chiao Joanne, ▲  
**HeroBakery GmbH**

Talk to your supervisors and colleagues. Speak up and take initiatives. You will be rewarded :)

You might not be so experienced, but you could turn it into an asset.

As an intern you don't merely get inspirations from the other professionals in the team.

You can also inspire the team with refreshingly new (though probably green) ideas.



Chu Lok Hang Freya, ▼  
**Lucy Turpin Communications**



“

*Eric Chan (on the right) is curious and proactive in nature. Combined with the technical and analytical skills he possesses, excellent results are produced. I was also impressed how quickly he was to understand and manage the whole process for handling daily business tasks. His diligence was also remarkable, excelled in every new task he was given. Eric is a very bright and kind young man, and he will most certainly develop into a great asset for organizations he will work for.*

”

- Mr Lafuente, **Lesara AG**



Exhibition set-up in progress...



So you think team meeting has to be in a meeting room around a long huge table? Hmmmm...time to think differently.



Wan Chun Wa Sheryl, ▲  
**Lesara AG**

One of the hidden fringe benefits of working for an online fashion retailer: check out what's there for the coming season girls!



### WE ALL LOVE GERMAN BEERS & PRETZELS.

And it is always the signature and great food that tells you so much of a culture, connects people, and creates fond memories.



▼ So long, Farewell, Auf Wiedersehen, Goodbye.



▲ The majestic and exquisite architecture in Europe is so worth traveling all the way for.

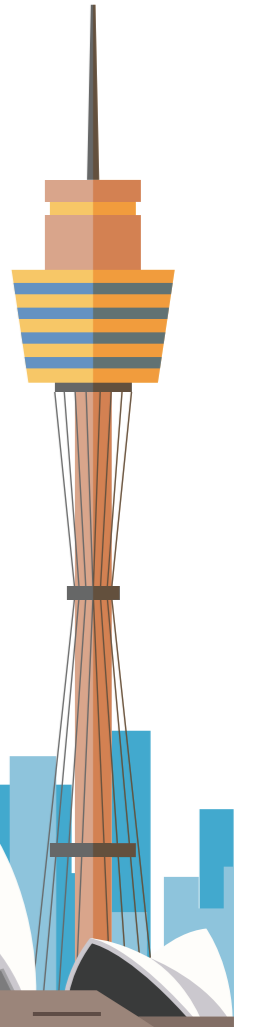


▲ Tam Hoi Kei Rachel, AVIAREPS AG

# Global Work Attachment Programme Sydney

## LIST OF 2018 INTERNSHIP PARTNERS AND INTERNS

- ▶ **Agent99 PR**  
Amparo Jesa Mae, *Media & Communication*
- ▶ **Arctic Intelligence**  
Chao Cheuk Hei Derrick, *Information Management*
- ▶ **Counterpoint Community Services INC**  
Wan Mei Shan Shanna, *Public Policy & Politics*  
Wong Fung Man Dorothy, *Public Policy & Politics*
- ▶ **Fitzgerald Jenkins Recruitment**  
Duanmu Chunzhi Lavinia, *Finance*
- ▶ **Good Environmental Choice Australia**  
Ko Tsun Hon Benjamin, *Industrial Engineering & Engineering Management*  
Lee Ying Ying Joyce, *Digital TV & Broadcasting*
- ▶ **GoodnessMe Box**  
Au Siu Chun Carson, *Biomedical Sciences*  
Xu Chenyan Ella, *Finance*
- ▶ **GradConnection**  
Jaesiri Navakamol Rookie, *Business Economics*  
Ng Sik Hei Tommy, *Information Management*
- ▶ **Kimberlin Education**  
Tam Hong Shing Andrew, *Information Management*  
Yiu Lok Man Natasha, *Creative Media*
- ▶ **Kogarah Community Services**  
Chan Chung Kei Jackie, *Public Policy & Politics*  
Luong Ngai Po Venessa, *Industrial Engineering & Engineering Management*
- ▶ **Marketing Bee**  
Tse Zi Yi Jeannie, *Creative Media*
- ▶ **Sandwalk Partners**  
Kwong Yin Kwan Kennis, *Information Management*
- ▶ **Terri Bell & Co**  
Aslam Umme Habiba, *English Studies*  
Cheung Sammi, *Law*
- ▶ **Think Creative & Print**  
Lei Weng Tak Cynthia, *Marketing*
- ▶ **Walker Andersen**  
Kaur Ramanpreet, *Finance*
- ▶ **Western Sydney Community Centre**  
Yam Sin Yan Stella, *Politics*





Working in a multi-cultural workplace?  
Sharp communication skills would come in handy.



▲ Tse Zi Yi Jeannie, *Marketing Bee*

# Words From Employers

“  
We have been extremely pleased with Kennis' work. We can see her development and growth throughout the ten weeks at Sandwalk rapidly increasing as her confidence grew with greater understanding of the business, projects and client needs. We believe she has the skills, talent and ability to forge a successful professional career, whichever path she decides to go.  
”  
- Sandwalk Partners

Always work in a team, communicate and get your ideas across.



▲ Lee Ying Ying Joyce, *Good Environmental Choice Australia*



Yiu Lok Man Natasha, ▲ *Kimberlin Education*

Sharing from the professionals in the industry helps you make wise decisions on your career.



▲ Kwong Yin Kwan Kennis, *Sandwalk Partners*



▲ Aslam Umme Habiba, *Terri Bell & Co*

◀ In-depth research is critical in legal work! And it definitely helps you build up solid knowledge required in this profession.







“

*Dorothy (on the left) has shown great professionalism while on placement. She has integrated well with our organisation and is personable with both internal and external clients. Shanna has progressed well during her placement. She has good understanding of the policies that she came across and is a quick learner.*

”

**- Mr Yan, Counterpoint Community Services**

▲ Wong Fung Man Dorothy & Wan Mei Shan Shanna, **Counterpoint Community Services**

## Wanted

PASSION.  
ANALYTICAL SKILLS.  
BROAD KNOWLEDGE.  
ABILITY TO COMMUNICATE.  
OUT OF THE BOX THINKING.



▲ Lei Weng Tak Cynthia, **Think Creative & Print**



▲ Cheung Sammi, **Terri Bell & Co**

Be proactive and add value to the team – there’s always a platform for you to shine.



▲ Jaesiri Navakamol Rookie & Ng Sik Hei Tommy, **GradConnection**



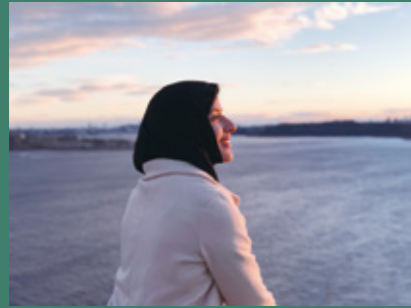
▲ Amparo Jesa Mae, **Agent99 PR**



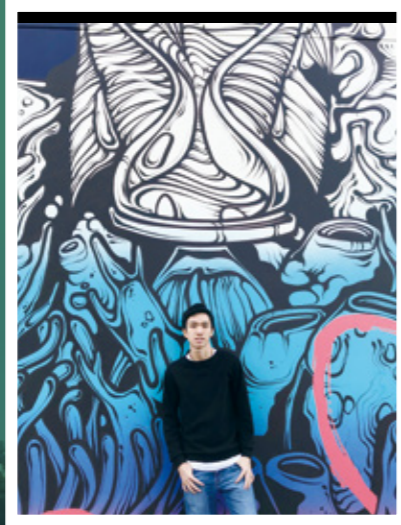
▲ Chao Cheuk Hei Derrick, **Arctic Intelligence**

Taking up an internship is all about applying knowledge into practice and learning through the experience.





An internship gives you the clarity about the type of career you'd like to shape. Just imagine the confidence you will gain along the way!



Let's not just work, work, work, work, work – you can always have fun while interning in Sydney!

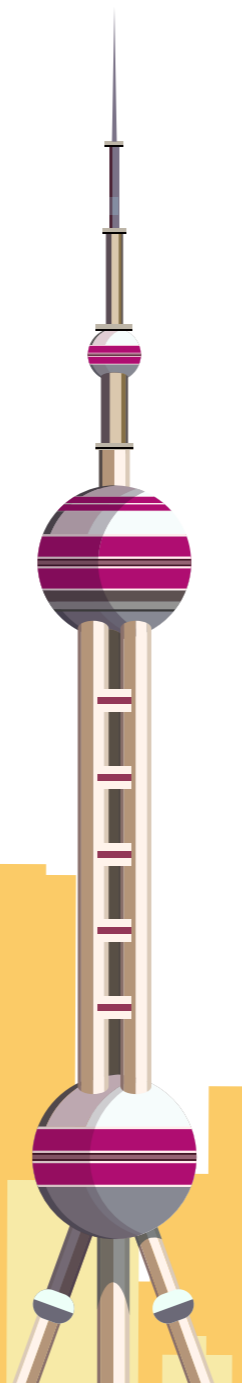




# Global Work Attachment Programme Shanghai

## LIST OF 2018 INTERNSHIP PARTNERS AND INTERNS

- ▶ **@Comm**  
Chen Sheng Chi Ashley, *Media & Communication*  
Cheung Cheuk Wa Cherry, *Creative Media*  
Li Runmei Mia, *Digital TV & Broadcasting*
- ▶ **Avia-Tek Limited**  
Lam Kung Wai Timothy, *Business Analysis*
- ▶ **Hong Kong Economic and Trade Office in Shanghai**  
Chan Sum Yee Suri, *Finance*  
Chow Kwun Hei Mattrew, *Finance*
- ▶ **Jardin OneSolution (China)**  
Chiu Tsz Yu Ken, *Information Engineering*  
Lau Hon Man Patrick, *Electronic & Communication Engineering*  
Ng King Lung Danny, *Mechanical Engineering*
- ▶ **N-Dynamic Market Research & Consultancy Ltd.**  
Ng Ming Hin Victor, *Business Analysis*
- ▶ **Sage House Consultancy Limited**  
Wai Pui Yee Pearl, *Marketing*
- ▶ **Wunderman Shanghai**  
Lam Po Yan Connie, *Environmental Science & Management*  
Sun Qinyao Selina, *New Media*



## Words From Employers



▲ Chan Sum Yee Suri

Really glad to work with these wonderful colleagues. Having so many great mentors is definitely to be grateful for.

“

Suri Chan (in the centre) demonstrated leadership in team work, and an ability to lead other team members to handle the preparation work and logistical matters in an organised manner. Overall, Ms Chan's performance was impressive and outstanding.

”

- Ms Lau,  
Hong Kong Economic and Trade Office in Shanghai



▲ Chow Kwun Hei Mattrew,  
Hong Kong Economic and Trade Office in Shanghai

Working closely with your colleagues is the best way to facilitate idea exchange and enhance efficiency.





The mesmerising view of Waitan Waterfront is not to be missed when you are in Shanghai.

It feels fantastic to take part in various marketing projects. Hard work would always pay off.



Wai Pui Yee Pearl, ▲  
**Sage House Consultancy Limited**



“

Keep up with the great personality and the hard work, Ken! Good Job.

”

- Mr Yang,  
**Jardine OneSolution (China)**



Chiu Tsz Yu Ken, ▲  
**Jardine OneSolution (China)**

Creating major project proposals with architectural diagrams and technical specifications. Attention to details is KEY!



When you are working with such an amazing team, 8 weeks is just too short!

◀ Lam Kung Wai Timothy,  
**Avia-Tek Limited**



Keep calm, take a deep breath, and present to a big crowd on stage at a company event. The well-rehearsed speech went smoothly!

◀ Lau Hon Man Patrick,  
**Jardine OneSolution (China)**



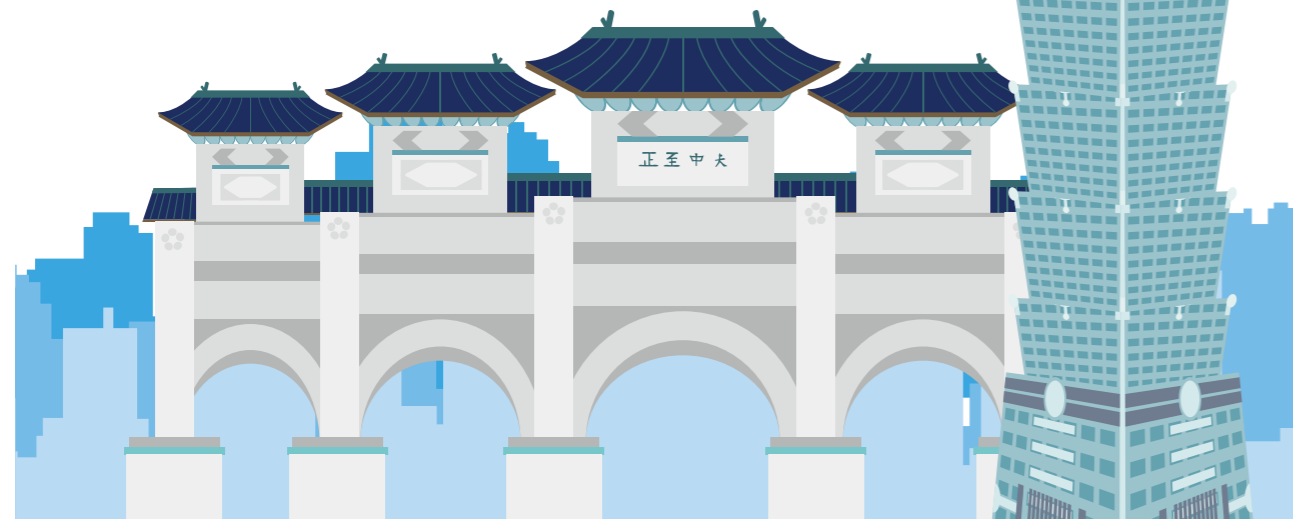
Can't wait to explore the rich cultural heritage of Shanghai!



# Global Work Attachment Programme Taipei

## LIST OF 2018 INTERNSHIP PARTNERS AND INTERNS

- ▶ **Asia Digital Media Co. Ltd.**  
Chiu Wing Sze Wincy, *Media & Communication*  
Ng Yuen Man Jocelyn, *Digital TV & Broadcasting*
- ▶ **Dream Travel Taiwan Association**  
Chau Lok Chi Gigi, *Chinese & History*
- ▶ **Fubon Financial Holding Co., Ltd.**  
Tang Pak Hing Joe, *Information Management*
- ▶ **Global Views – Commonwealth Publishing Group**  
Mau Hau Man Mandy, *Marketing*
- ▶ **Red Room Culture, Education & Arts Association**  
Wong Yuk Ting Yuki, *Marketing*



An internship that gives you the chance to get involved in TV programme dubbing, magazine interviews, photo shooting and drafting press releases! The most fruitful placement experience ever!



▲ Chiu Wing Sze Wincy, **Asia Digital Media Co. Ltd.**



▲ Ng Yuen Man Jocelyn, **Asia Digital Media Co. Ltd.**



# Words From Employers

“  
With Mandy's (on the right) contribution, we did not receive any complaints from customers. She communicated efficiently and effectively with our customers.”

- Ms Cho, Global Views – Commonwealth Publishing Group



▲ Mau Hau Man Mandy, Global Views - Commonwealth Publishing Group

Consult seasoned professionals for suggestions to refine the output.



Chau Lok Chi Gigi, ▲ Dream Travel Taiwan Association

Learning about the tourism policy of Taipei certainly has broadened my horizon.



“  
Yuki Wong (on the left) presented a very thorough analysis on multiple existing and potential social media platforms used by the organisation. Enthusiastic, prompt and strong team player, with developing communication skills for Red Room brainstorming, and content creation.”

- Mr. Mehta, Red Room International Village



Wong Yuk Ting Yuki, ▼ Red Room Culture, Education & Arts Association

Team building workshops enhance cohesiveness of the staff!



How could this wonderful journey be complete without enjoying the beautiful scenery of Taiwan?



# Global Work Attachment Programme Tokyo & Hokkaido

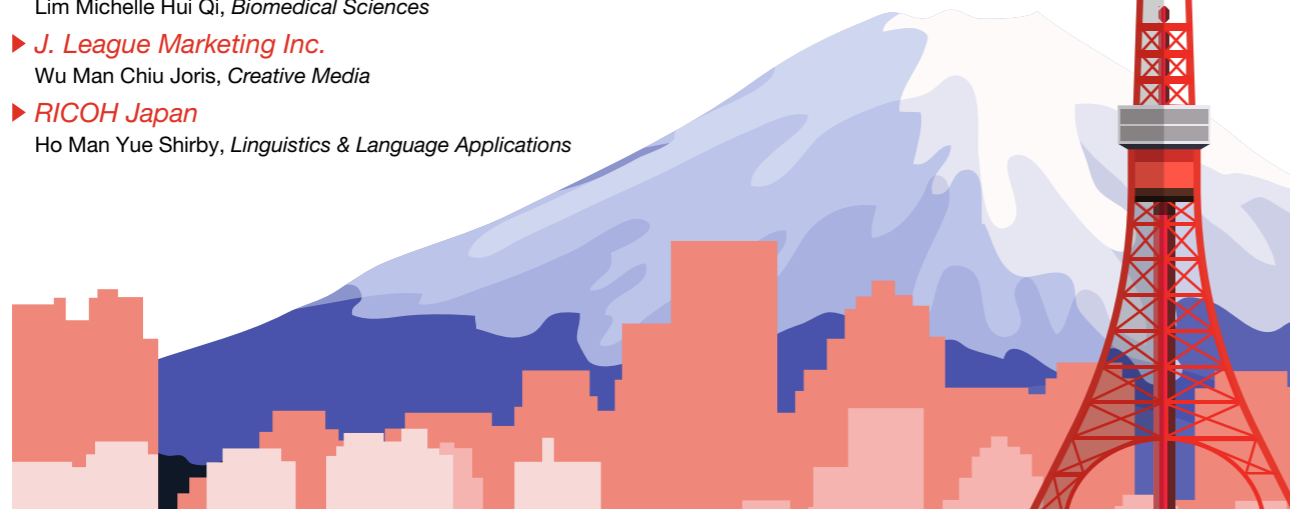
## LIST OF 2018 INTERNSHIP PARTNERS AND INTERNS

### TOKYO:

- ▶ **AVIAREPS**  
To Tsz Ching Bernice, *Asian & International Studies*
- ▶ **Gaps Mobile Co., Ltd.**  
Lin Yen Chu Regina, *Creative Media*
- ▶ **Global Daily Co., Ltd.**  
Chong Wing Yan Miya, *Asian & International Studies*
- ▶ **Global Trust Networks Co., Ltd.**  
Leung Sin Yee Muriel, *Chinese & History*  
Lim Michelle Hui Qi, *Biomedical Sciences*
- ▶ **J. League Marketing Inc.**  
Wu Man Chiu Joris, *Creative Media*
- ▶ **RICOH Japan**  
Ho Man Yue Shirby, *Linguistics & Language Applications*

### HOKKAIDO:

- ▶ **Career Bank Co., Ltd.**  
Chiu Chin Ching Sharon, *Chemistry*  
Feng Fanjuan Cherry, *Finance*  
Ma Yi Shun Elizabeth, *International Business*
- ▶ **FREEPLUS Inc.**  
Lee Hui Ning Beatrice, *Public Policy & Politics*



## Words From Employers

“

We are all impressed with Shirby's (4<sup>th</sup> from the right) work attitude. She has high ability in communication and can get along well with the team.

”

- Mr Kazuya, RICOH Japan

Working with the Japanese, you will surely be amazed by their professional business etiquette.



▲ Chiu Chin Ching Sharon, Feng Fanjuan Cherry & Ma Yi Shun Elizabeth, Career Bank Co., Ltd

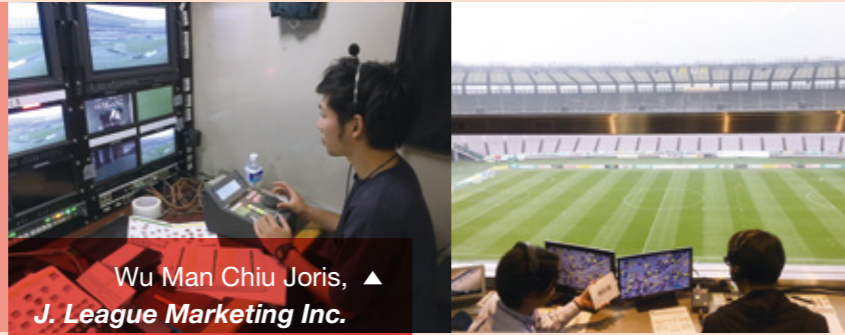


▲ Ho Man Yue Shirby, RICOH Japan

Being an interpreter for visitors and clients is never easy; but I DID IT!



Getting ready for the J-League football match live broadcast.



Wu Man Chiu Joris, ▲  
**J. League Marketing Inc.**

Chong Wing Yan Miya, ▼  
**Global Daily Co., Ltd.**



“

No matter what assignment Elizabeth (in the centre) was given, she could always handle well with creativity and cooperativeness.

”

– Mr. Mizuta, Career Bank Co. Ltd.

“*Ho-Ren-So*”, “Report-Contact-Consult” in Japanese; always stick with this fundamental Japanese business culture and closely communicate with the team.

▼ **AVIAREPS**



Fun time at work:)



▲ **Career Bank Co., Ltd**

Meeting new friends; experiencing new things – our first-ever dragon boat race.





# Acknowledgements

Special thanks to companies that offered internship opportunities to CityU students:

## BERLIN

- Copytrack
- Lesara AG
- SomoS
- Tandem

## MUNICH

- AVIAREPS AG
- Dr Kaske Marketing Agency
- HeroBakery GmbH
- Lucy Turpin Communications

## SHANGHAI

- @Comm
- Avia-Tek Limited
- Hong Kong Economic and Trade Office in Shanghai
- Jardine OneSolution (China)
- N-Dynamic Market Research & Consultancy Ltd.
- Sage House Consultancy Limited
- Wunderman Shanghai

## SYDNEY

- Agent99 PR
- Arctic Intelligence
- Counterpoint Community Services INC
- Fitzgerald Jenkins Recruitment
- Good Environmental Choice Australia
- GoodnessMe Box
- GradConnection
- Kimberlin Education
- Kogarah Community Services
- Marketing Bee
- Sandwalk Partners
- Terri Bell & Co
- Think Creative & Print
- Walker Andersen
- Western Sydney Community Centre

## TAIPEI

- Asia Digital Media Co. Ltd.
- Dream Travel Taiwan Association
- Fubon Financial Holding Co., Ltd.
- Global Views – Commonwealth Publishing Group
- Red Room Culture, Education & Arts Association

## TOKYO

- AVIAREPS
- Gaps Mobile Co., Ltd.
- Global Daily Co., Ltd.
- Global Trust Networks Co., Ltd.
- J. League Marketing Inc.
- RICOH Japan

## HOKKAIDO

- Career Bank Co., Ltd.
- FREEPLUS Inc.