



WE ARE LOOKING FOR YOU

Huawei Hong Kong Research Center

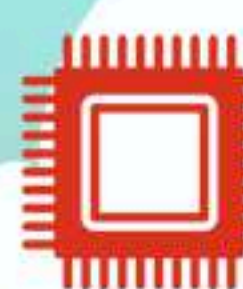
2025 Graduate Program



1. RESEARCHER/INTERN



2. SOFTWARE ENGINEER/INTERN



3. DIGITAL DESIGN & VERIFICATION ENGINEER/INTERN



For Application



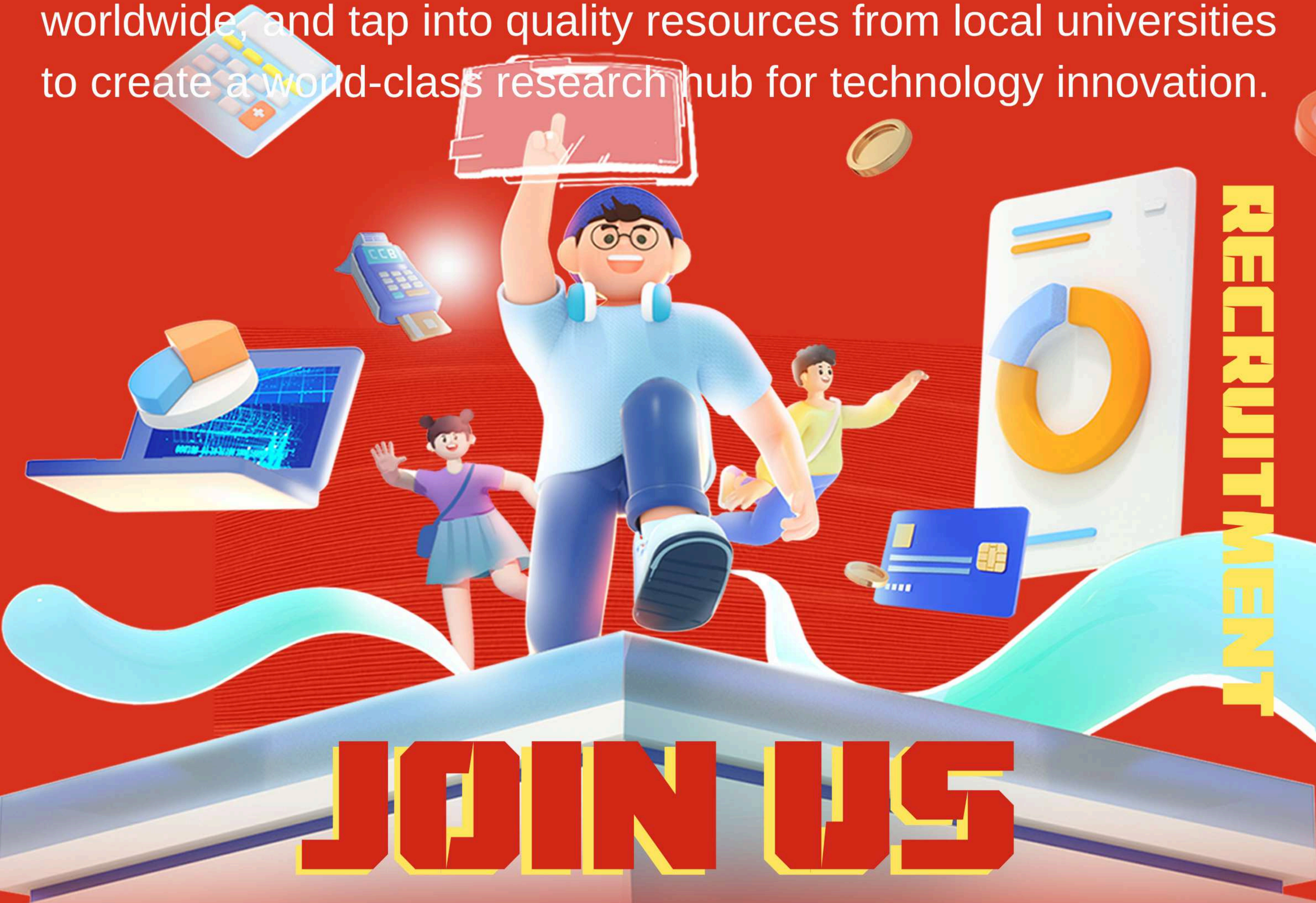
Get career opportunities and develop your skills at
Huawei Hong Kong Research Center
Join us and move the world forward!

Interested students please send your full resume
with your expected graduation date to us by email

hkrcrecruit@huawei.com

ABOUT HUAWEI HKRC

Established in 2018, HKRC is a fast-growing international research center. The company aims to capitalize on the unique strengths of Hong Kong, bring together high-end talents worldwide, and tap into quality resources from local universities to create a world-class research hub for technology innovation.



RECRUITMENT

JOIN US

Research Directions:

**SOFTWARE
ENGINEERING**

AI

**THEORETICAL
RESEARCH**

CHIPSETS