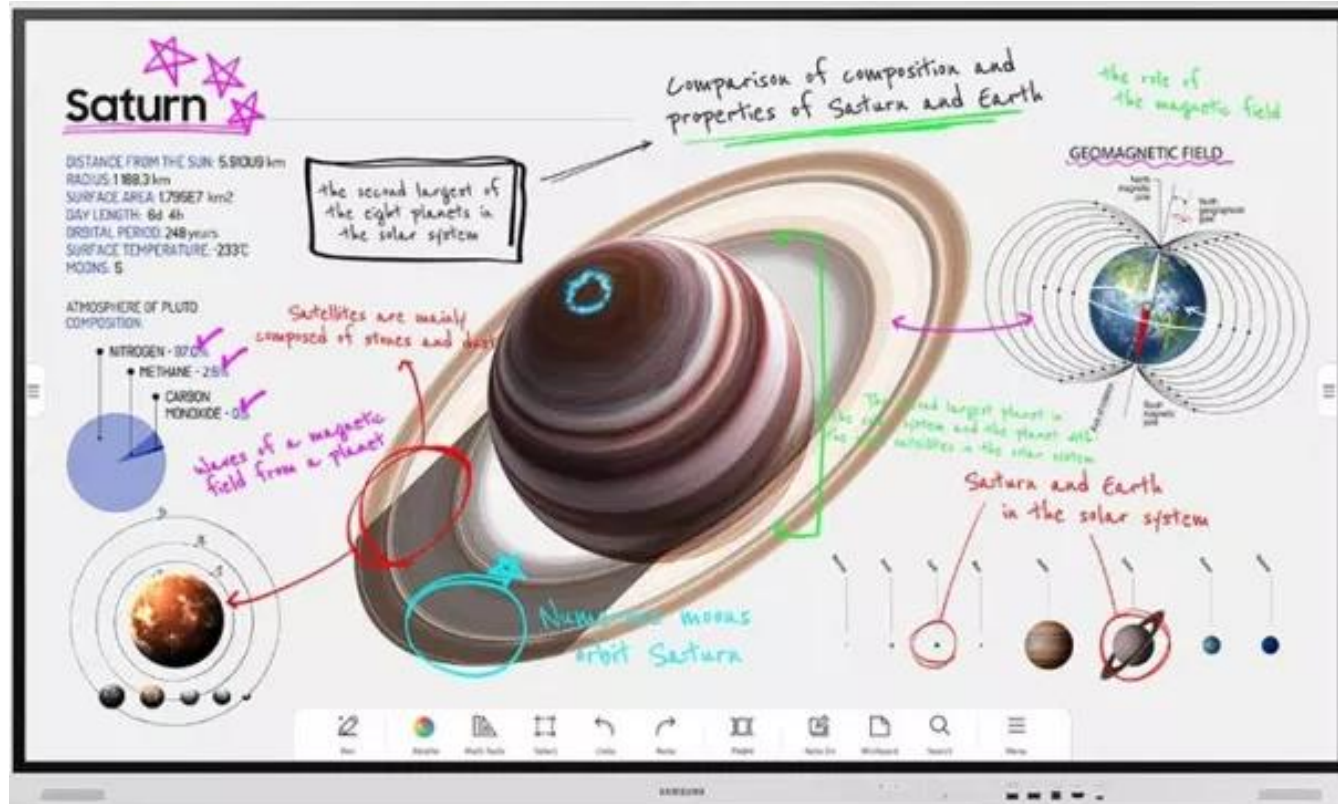


Samsung Flip Quick User Guide



Quick user guide

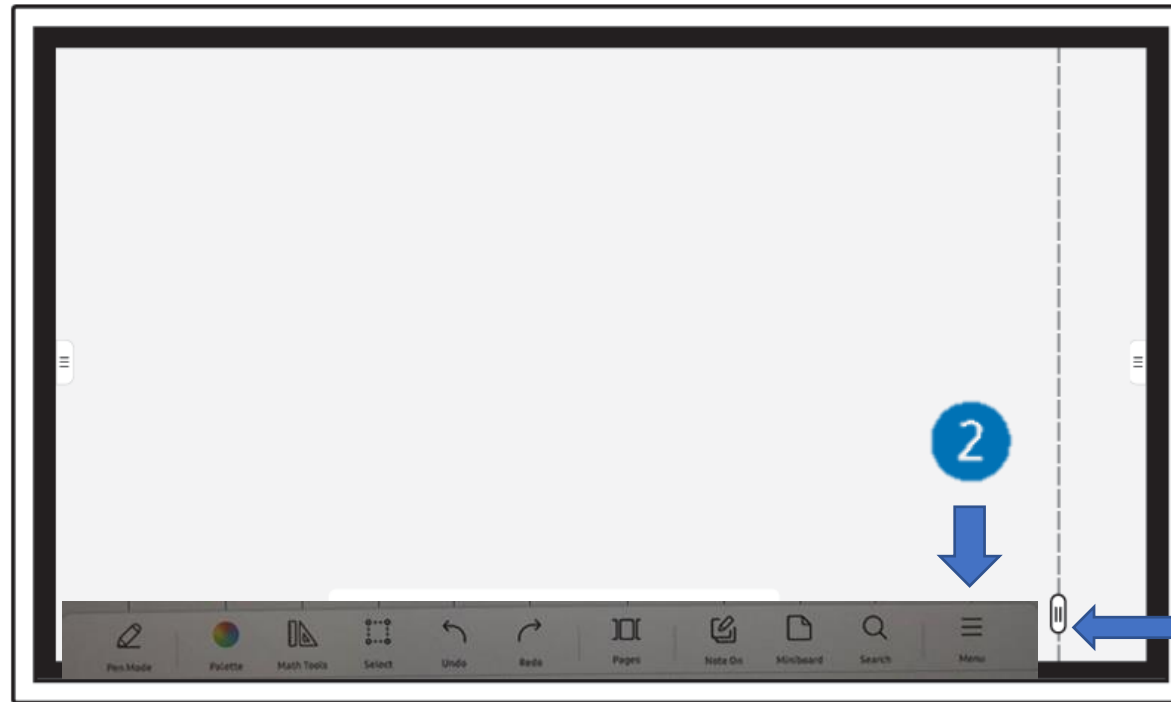


Run Run Shaw Library

香港城市大學
City University of Hong Kong

Samsung Flip Quick User Guide

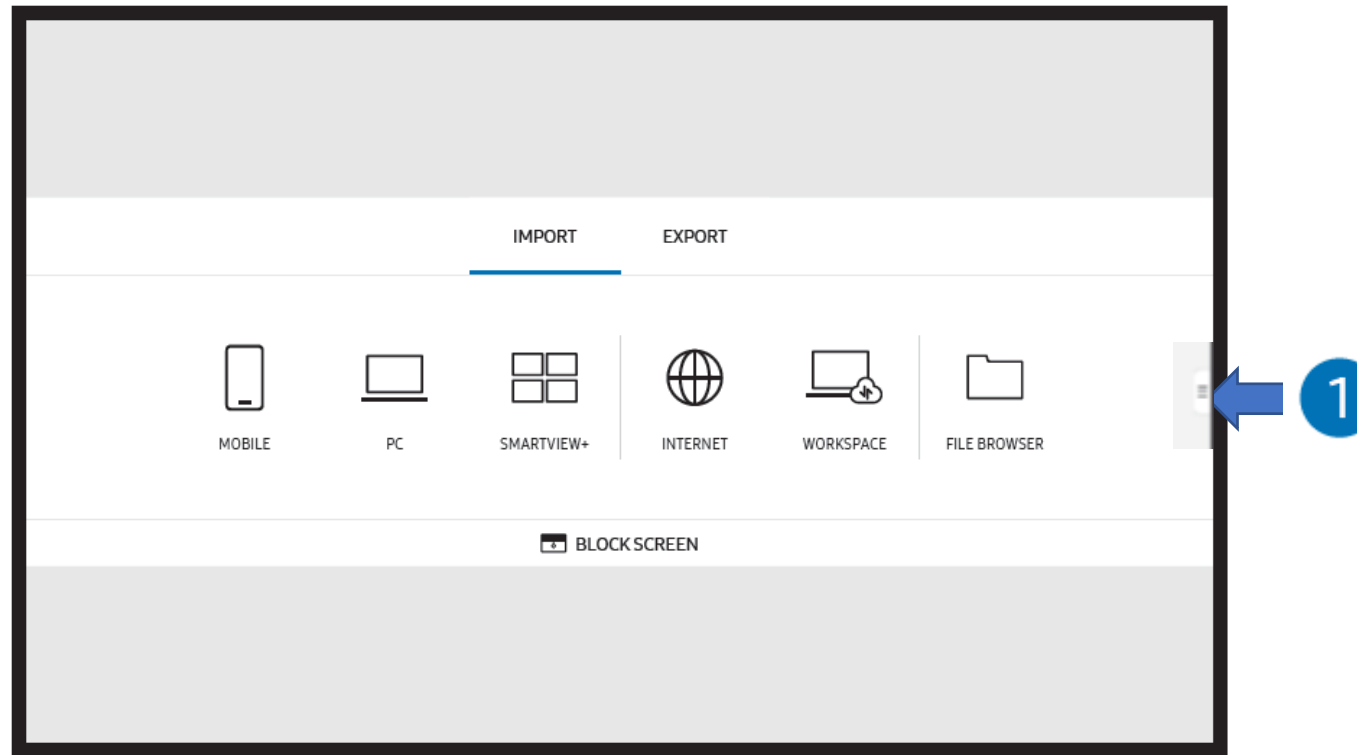
Turn On /Off Pen Mode



Touch the button and drag horizontally to scroll through other pages


- 1 Press the On/Off button to enter the Pen mode (press and hold the On/Off for a few seconds to turn it off) :
 - Free handwriting
 - Drawing
 - Add image/notes/Miniboard...

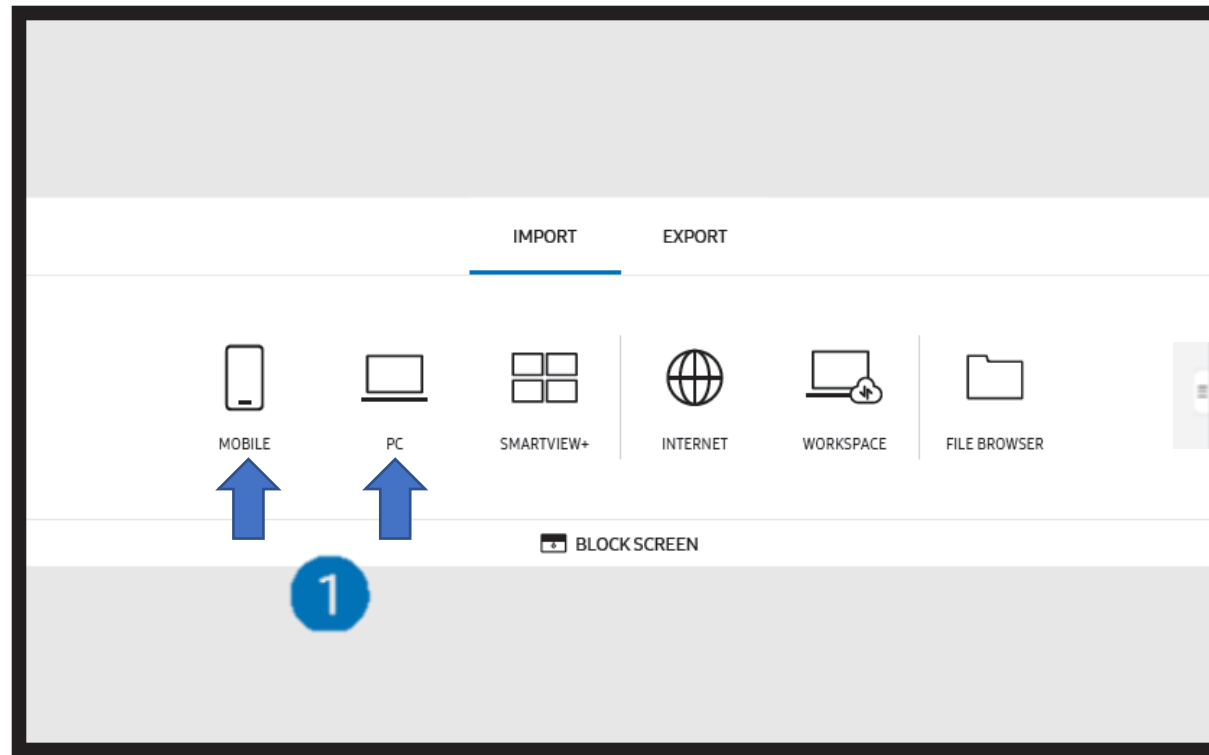
- 2 Select more options, e.g., **“How to use”** for detailed online instruction, **“Forms”** to insert useful templates; etc.



Import:

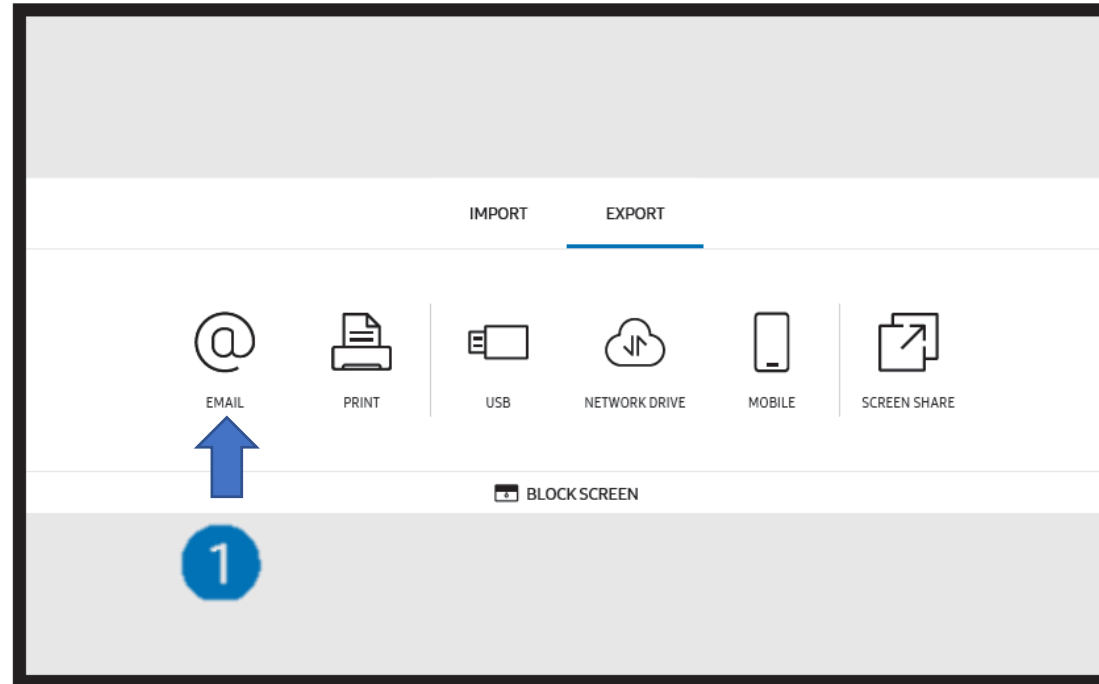
Import images or PDF documents onto the Flip and annotate them directly on the screen.

- 1 Tap  on the left or right of the screen. Then, choose IMPORT =>
 - Select Mobile, PC, or SmartView+ for *screen mirroring*
 - Select the desired device/location for *image/document import*



Screen Mirroring:

- 1 • Display content from your laptop, tablet, or smartphone on the Flip's screen.
• Allow remote control from the Flip to PC



1 Save and Share:

- Enable you to save your work and share it with others. You can save the content and send it via different channels.
- Recommended to use email

1. Basic Control

Use the menu to access more features.

Import: Browse your content.
Export: Share a roll to others.

Scroll here to view more pages.

Press and hold anywhere to access the Quick Menu.

Pen or Brush Mode

Palette

Maths Tools

Selection Tools

Undo

Redo

Open the Page Viewer.

Note On/Off

Miniboard

Search

More Menu
The More menu consists of the following options:
New/Save/Roll Browser/Forms/Roll Lock/Settings/
How to Use

End Meeting

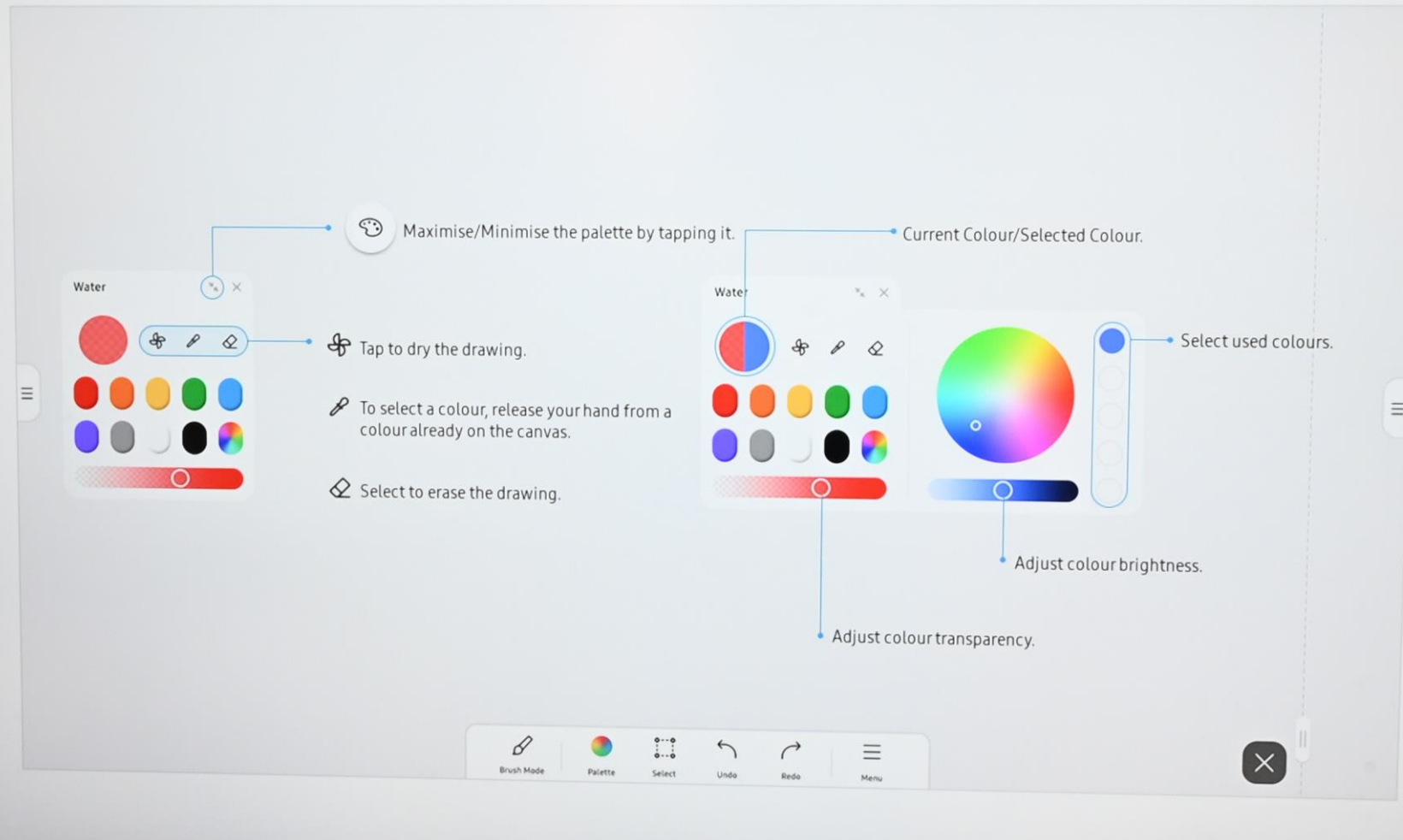
Scan the QR code to watch via your mobile device.

Drag this button to move to the next page of a roll.

The image shows a digital whiteboard interface. At the top, a hand is shown interacting with the board. A 'Quick Menu' is open, displaying 'Pen' and 'Highlighter' options with a color palette. Below the board, a toolbar contains icons for 'Pen Mode', 'Palette', 'Math Tools', 'Select', 'Undo', 'Redo', 'Pages', 'Note On', 'Miniboard', 'Search', and 'Menu'. A 'More Menu' is also visible, listing options like 'New', 'Save', 'Roll Browser', 'Forms', 'Roll Lock', 'Settings', and 'How to Use'. A QR code is located in the bottom right corner, and a button at the bottom center is labeled 'Drag this button to move to the next page of a roll.'.

12. Brush Mode

Create watercolours or oil paintings using an actual brush.



13. Forms

Apply the desired forms to the roll.

Annotations:

- Add an image from your USB or network drive. (points to the '+' icon in the 'Add' section)
- Apply the form to all pages of the roll. (points to the 'All pages' checkbox)
- Fit the size of the form to the roll page. (points to the 'Fit to page' checkbox)
- If you choose Set as Default Form, this form will always be applied. This is activated only when All Pages is selected. (points to the 'Set as default form' checkbox)

Form Templates:

- White
- Black
- Green
- Note
- Grid
- Weekly (MON, TUE)
- Monthly (MON, TUE, WI)
- Checklist

Buttons: Preview, Apply, Cancel

Footer: Pen Mode, Palette, Math Tools, Select, Undo, Redo, Pages, Note On, MiniBoard, Search, Menu

2. Drawing

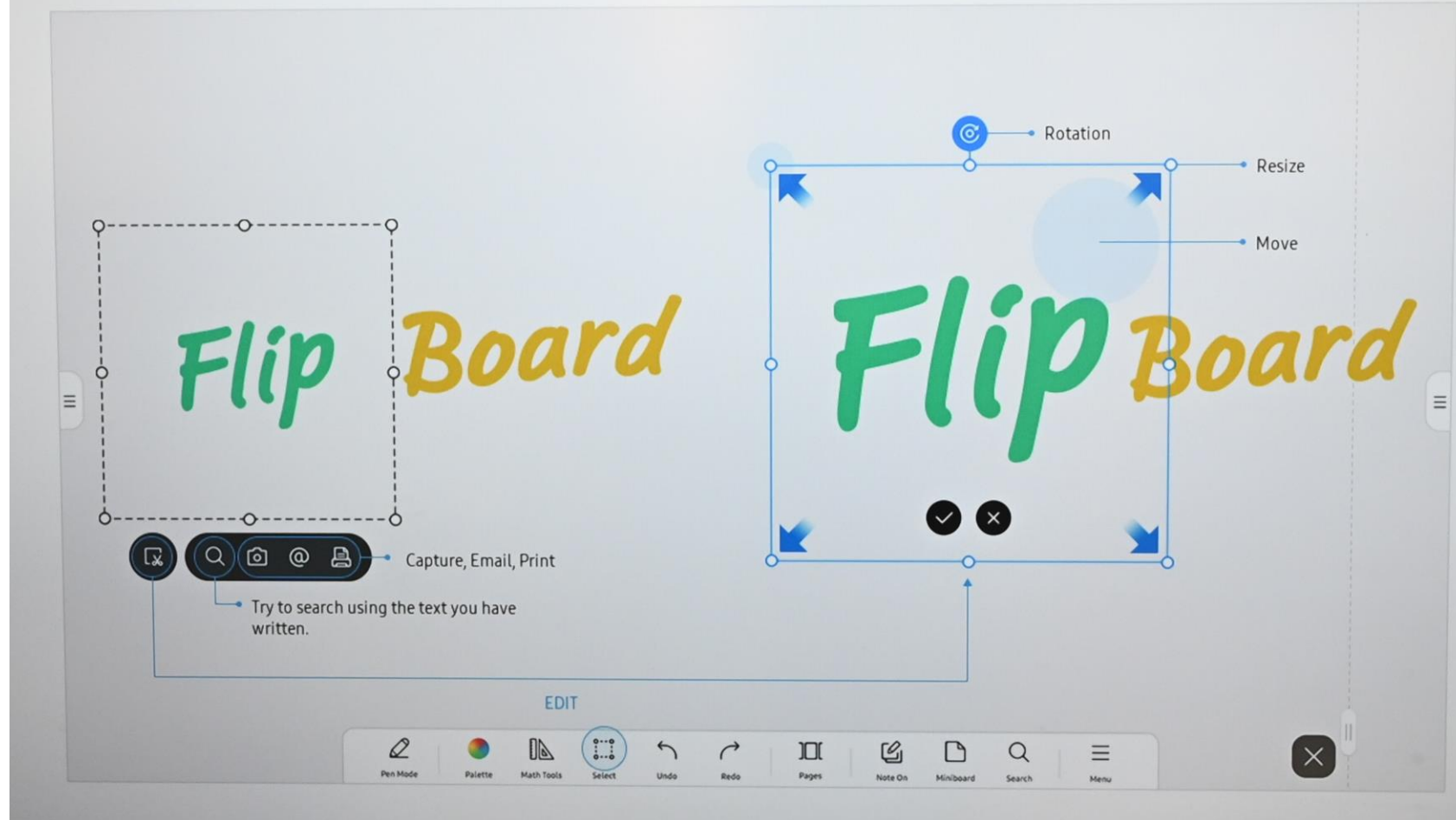
Draw freely using a supported pen.

The screenshot shows a digital drawing application interface with several key elements and annotations:

- Palette:** Located on the left, it features a 'Pen' icon and a 'Highlighter' icon. Below them is a color palette with various colored circles. An annotation points to the palette with the text: "Tap the Palette icon or press and hold the pen on the screen to change the pen colour and thickness."
- Pen Mode:** A green horizontal line is drawn below the palette. An annotation points to its tip with the text: "The end of pen is the highlighter."
- Erasing:** A hand is shown with a finger touching the word "Flip" and a palm touching a bar chart. An annotation points to these actions with the text: "Use your finger to erase a small area. Use your palm to erase a large area."
- Bottom Toolbar:** Contains icons for Pen Mode, Palette, Math Tools, Select, Undo, Redo, Pages, Note On, Miniboard, Search, and Menu. An annotation points to the Undo and Redo icons with the text: "Undo or redo your last action."
- Canvas:** Displays the word "Flip" in green, a bar chart with a red curve, and a yellow semi-circle, all with annotations.

4. Selection Tools

Select the area you want to edit, capture, send in an email, print, or search.



- The End -