

STEM Career Fair 2025, CityUHK

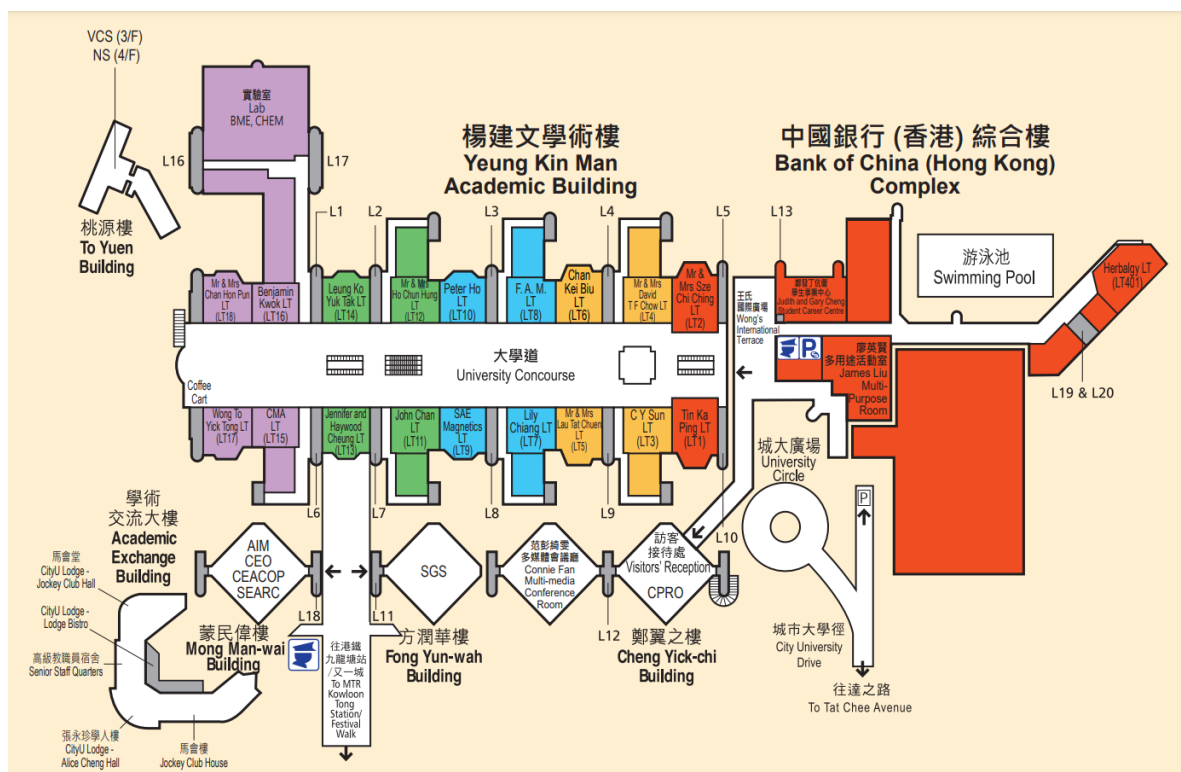
This document will guide you to the following key location. In case you encounter any difficulties, kindly reach out to Ms. Jessica Ng at (3442 6177) or Ms. Siu Ki Wong (3442 6176).

Key location overview:

Activity	Building
Career Fair Venues	Blue, Yellow, Purple Zones 4/F, Yeung Kin Man Academic Building
Parking for Registered Car	Carpark of Bank of China (Hong Kong) Complex
Networking lunch	City Chinese Restaurant 8/F, Bank of China (Hong Kong) Complex
Drop Off or Loading area	<ul style="list-style-type: none"> In front of University Circle/ Carpark of Bank of China (Hong Kong) Complex Carpark of Yeung Kin Man Academic Building at CityU Festival Walk

Overview: Yeung Kin Man Academic Building (YEUNG) and Bank of China (Hong Kong) Complex (BOC)

YEUNG is divided into 4 colour zones, i.e. Purple, Green, Blue and Yellow. BOC is located at the Red zone on the Campus.



How to go to the Career Fair at Yeung Kin Man Academic Building?

1. MTR

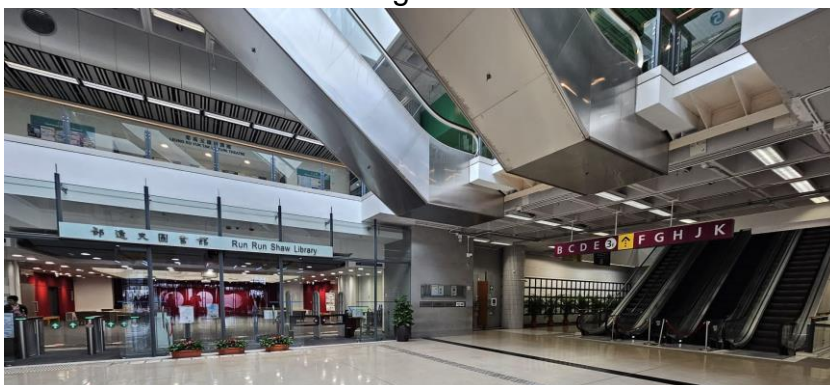
- Click this link ([here](#)) to guide you from Kowloon Tong Station to our campus.
- Present your QR code to the security counter (on the left)



- Yeung Kin Man Academic Building is in front of you. Pass through the red doors.

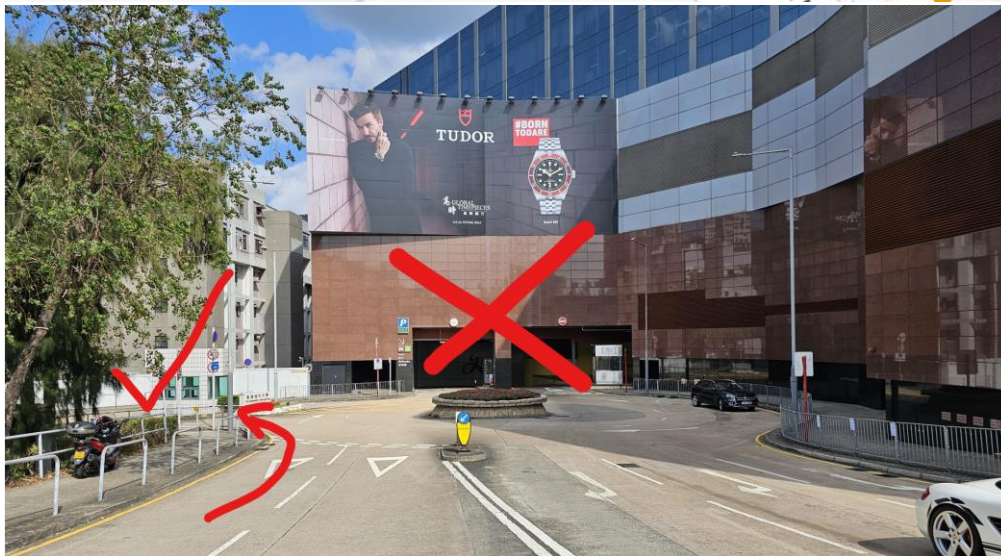
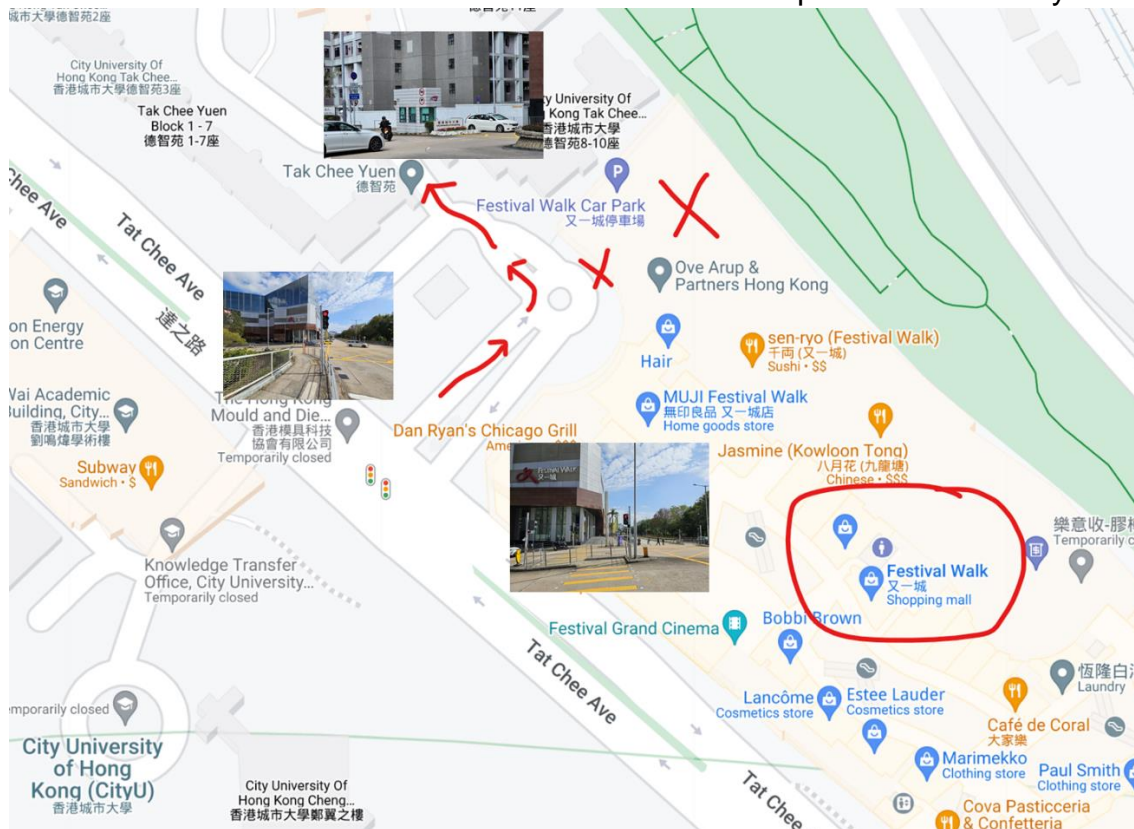


- The library is in front of you. Now, you are in 3rd floor.
- Take the escalator on the right-hand side to the 4th floor.



2. Registered Car at Carpark of Bank of China (Hong Kong) Complex

- Turn left in front of the entrance of the Festival Walk carpark and enter CityU



- Please stop in front of the security counter. Security will check the car plate number. You may be required to present the entry QR code



- Go straight to enter the carpark of the Bank of China (Hong Kong) Complex. (Don't turn right. You will enter the wrong car park). There will be a traffic light.



- You can park on the 3M Floor or 3rd Floor. Usually, 3M Floor is quite full. More seats in the 3rd Floor. Turn left to the 3rd floor.



- Take Lift 13 (only one lift) to 4/F





- The Security Counter is in front of you. (Do not go inside). Yeung Kin Man Academic Building (YEUNG) is on your right.



3. Drop Off or Loading area

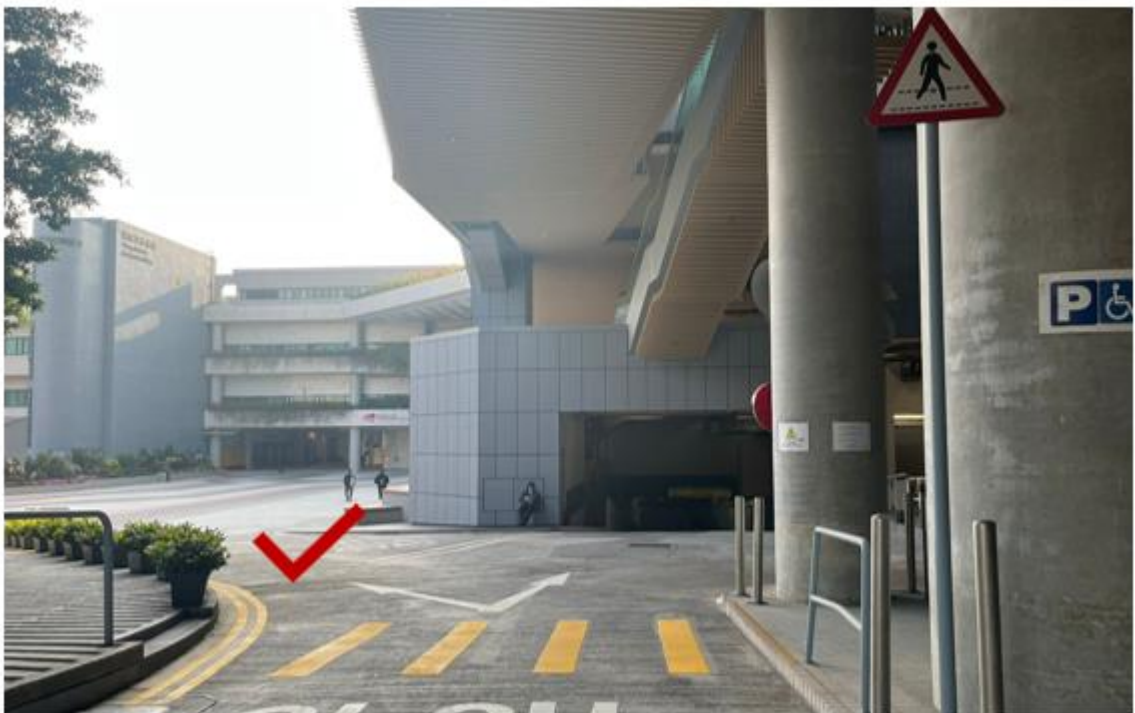
- In front of University Circle/ Carpark of Bank of China (Hong Kong) Complex
- Carpark of Yeung Kin Man Academic Building at CityU
- Festival Walk

There are 3 locations. It is difficult to say which location is the best.

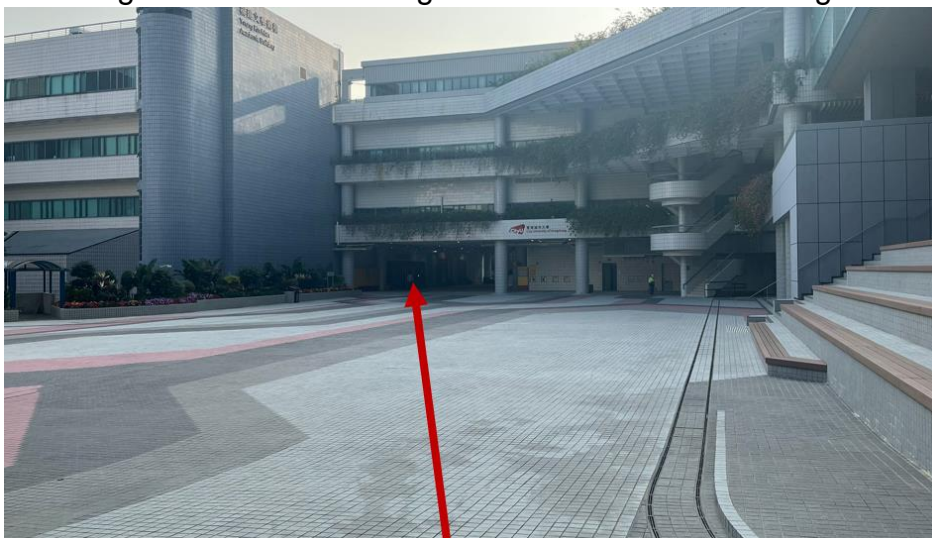
The nearest to the venue is “Carpark of Yeung Kin Man Academic Building at CityU” but the entrance is easily missed by some drivers.

a. In front of University Circle/ Carpark of Bank of China (Hong Kong) Complex

- Same steps as in the above “Registered Car at Carpark of Bank of China (Hong Kong) Complex”. However, the taxi has to drop off before the security counter. You have to walk inside.



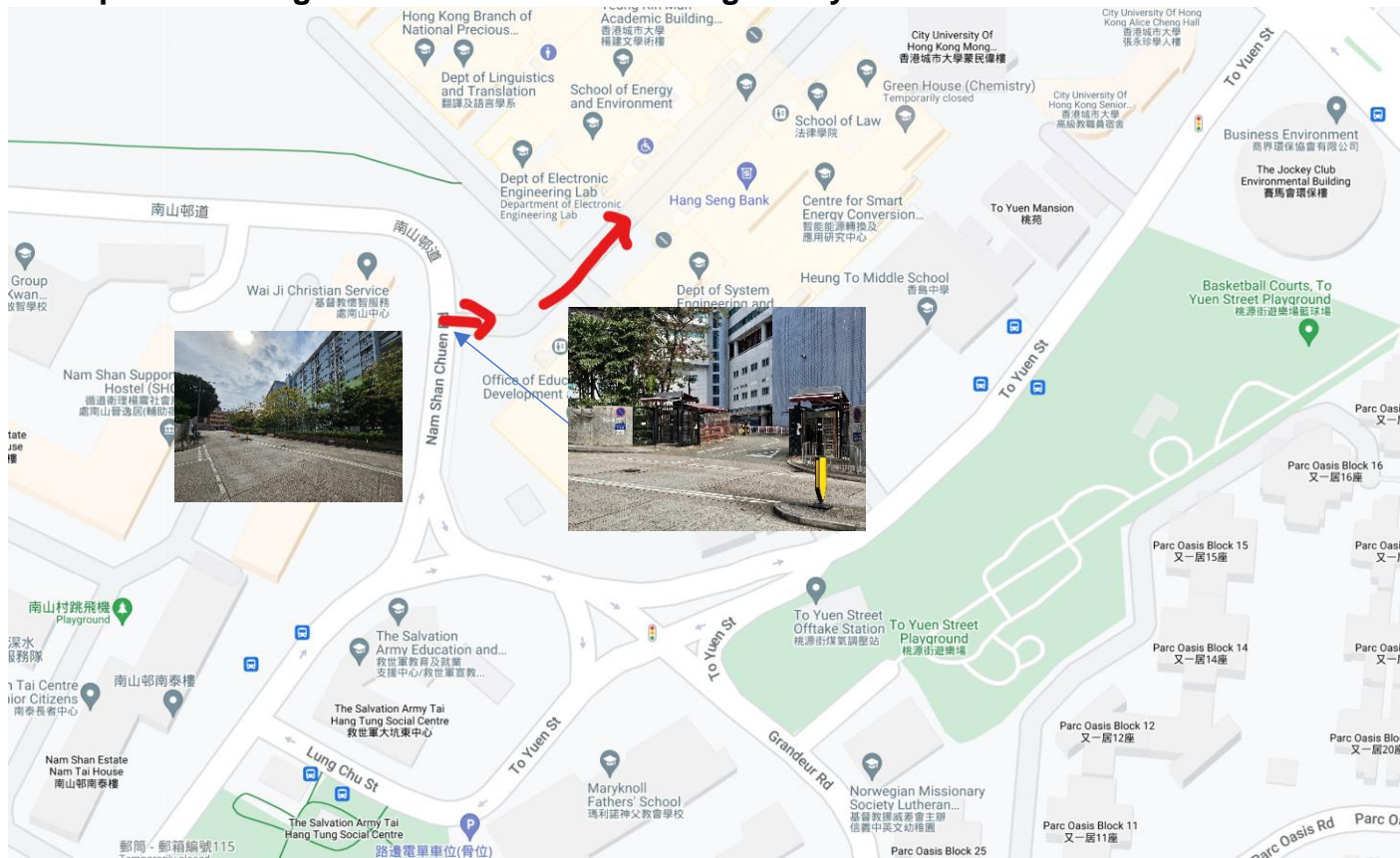
- Go straight to enter the Yeung Kin Man Academic Building



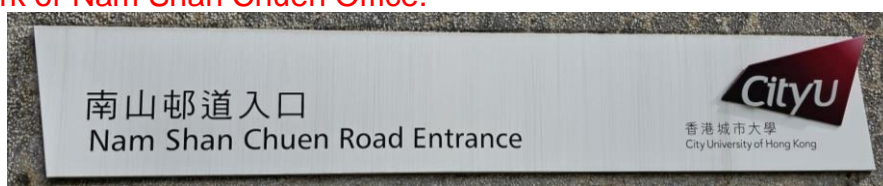
- Yeung Kin Man Academic Building is on your left

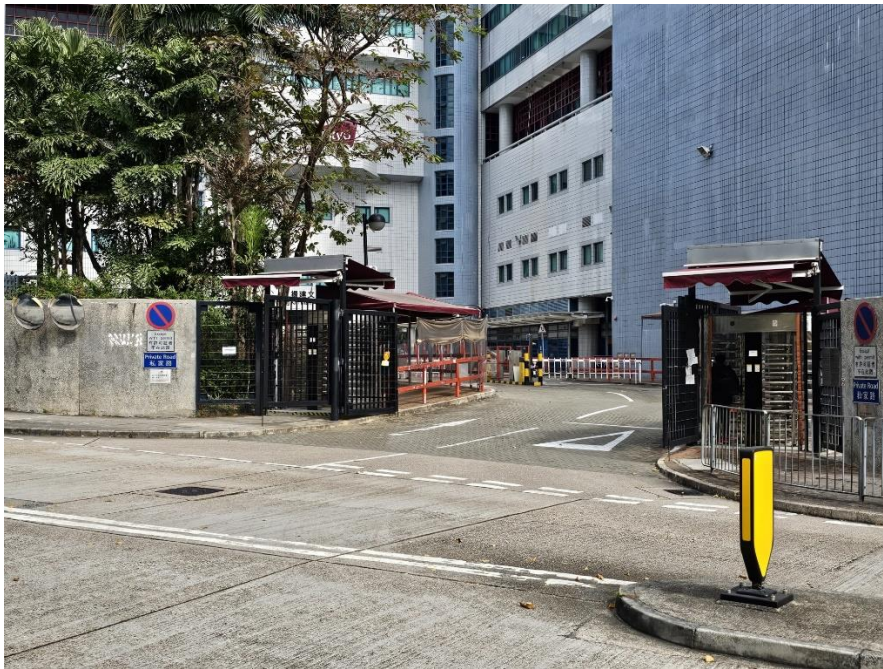


b. Carpark of Yeung Kin Man Academic Building at CityU

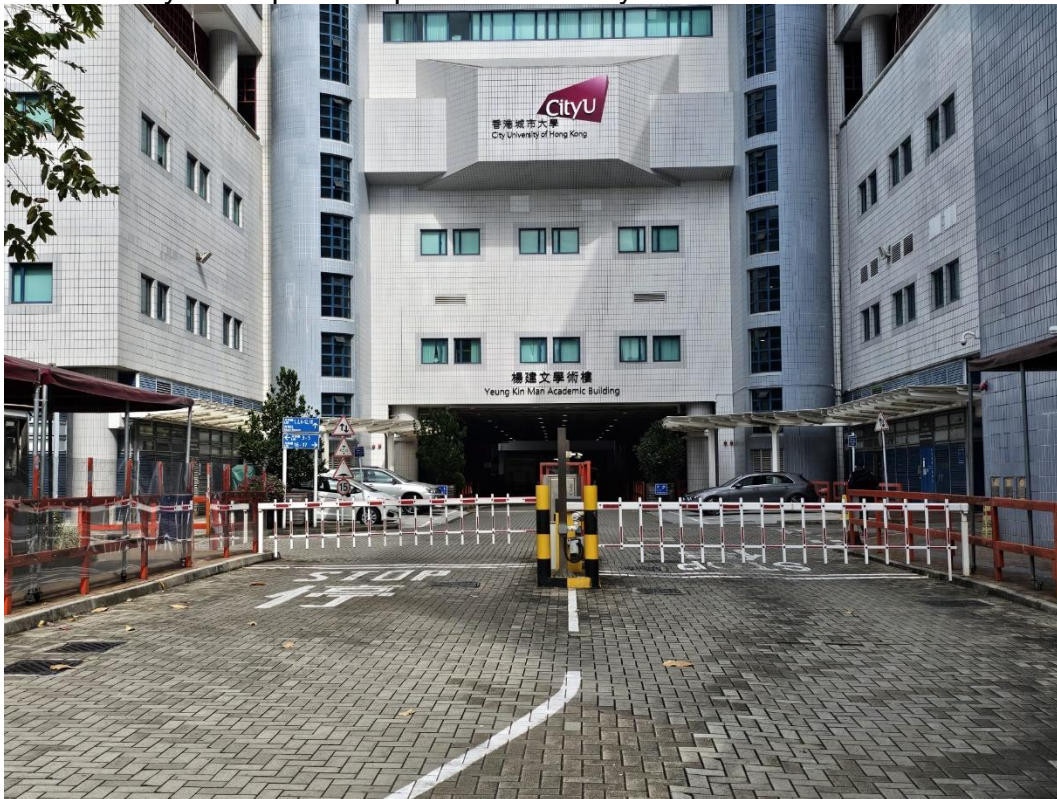


The entrance is Nam Shan Chuen Road entrance at CityU. It is not Nam Shan Chuen Car Park or Nam Shan Chuen Office.





- Please stop in front of the security counter. Security will check the car plate number. You may be required to present the entry QR code



- Blue zone or Yellow zone or Bank of China (Hong Kong) Complex: Take Lift 2 to the 4th floor
Purple zone: Take Lift 1 to the 4th floor



- Follow the sign to “University Concourse”



c. Festival Walk

- After you drop off from the taxi station, take the escalator to one floor down. Please follow the above guide “by MTR”