

**DEPARTMENT OF
ARCHITECTURE AND
CIVIL ENGINEERING**

 Suite 405, Festival Walk Office Tower
80 Tat Chee Avenue
Kowloon Tong
Hong Kong

 3442 7609

 <http://www.cityu.edu.hk/ace>

 acedept@cityu.edu.hk



About ACE

The Department of Architecture and Civil Engineering (ACE) at the City University of Hong Kong is unique in Hong Kong, as we offer a broad spectrum of construction-related programmes, from architecture to civil engineering, building services engineering (or architectural engineering) and surveying, within a single department. With this advantage, students are not only able to acquire professional knowledge of their chosen discipline of study (e.g. architecture), but they can also interact with students of other programmes (e.g. civil engineering) to broaden their horizon. The interdisciplinary knowledge and team working ability have made our graduates very sought after in the construction industry.

Our FACILITIES

- Built-informatics and Smart Cities Cluster (BICSS)
- Heavy Structures Testing Laboratory
- HVAC and Fire Services Laboratory
- Lift and Electrical Services Laboratory
- Soil Mechanics and Geology Laboratory
- Small Wind Tunnel
- Structural Vibration Laboratory

Our SCHOLARSHIPS

Every year about 450 university scholarships available for our outstanding undergraduate students.

Our PROFESSIONAL RECOGNITIONS

BEng in Civil Engineering and BEng in Architectural Engineering are fully accredited by the Hong Kong Institution of Engineers (HKIE) as a recognized degree for applying professional engineer qualification. BSc in Surveying* is accredited by the Hong Kong Institute of Surveyors (HKIS). BSc in Architectural Studies* is accredited by the Hong Kong Institute of Architects (HKIA).

*Replaced by BSc in Architecture and Surveying

THE DEPARTMENT OF ARCHITECTURE AND CIVIL ENGINEERING



**BUILD
TOMORROW
CREATE
THE FUTURE**

FIRST-YEAR ENTRY® (Admission code: JS1201 (JUPAS) / 1201 (non-JUPAS))

- Department of Architecture and Civil Engineering [options: BEng Architectural Engineering, BEng Civil Engineering (with 2 streams in Structural Engineering / Infrastructure and Smart City), BSc Architecture and Surveying (with 2 streams in Architecture / Surveying)]

ADVANCED STANDING I / II ENTRIES

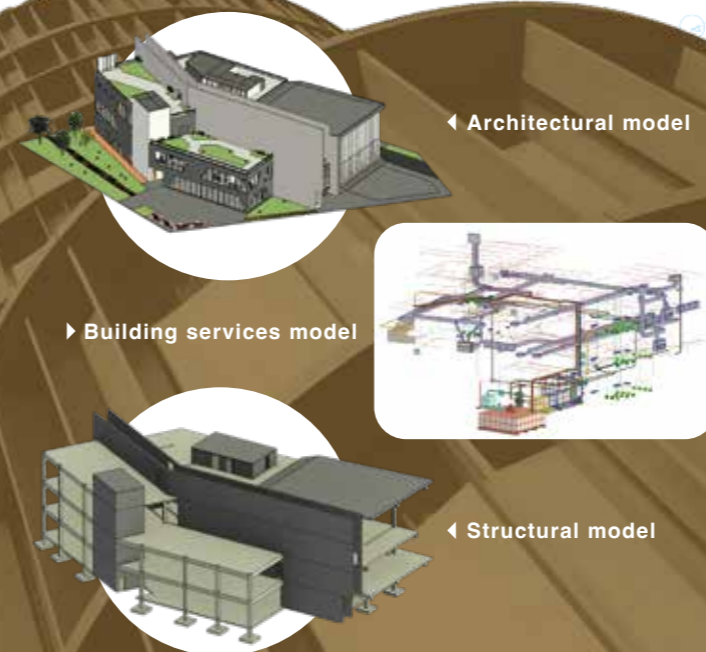
- Bachelor of Engineering in Architectural Engineering (Admission code: 1698A)
- Bachelor of Engineering in Civil Engineering (with 2 streams in Structural Engineering / Infrastructure and Smart City) (Admission code: 1699A)

Integrated Building Project Development (IBPD)

A unique multi-disciplinary practical project-based course

The IBPD is a mandatory course for final year students of all bachelor degree programmes currently run by the Department of Architecture and Civil Engineering. These programmes cover the studies of architecture, civil and structural engineering, building services engineering, and surveying.

In this course, students are required to use **Building Information Modelling (BIM)** across all disciplines in the development of a building construction project.



ACE students' BIM models in the IBPD project 2021

Bachelor of Science in Architecture and Surveying

(with 2 streams in Architecture / Surveying)

This major aims to provide the students with an environment in which to develop their intellectual, analytical and critical abilities, and to enable the graduates to become competent, skilled, reflective new members of surveying profession or architecture profession; with well-developed discipline knowledge who will communicate effectively; contribute through team and individual application of skills and knowledge to resolving problems; with a commitment to lifelong learning; and leadership in the building and construction professions.

STREAM : ARCHITECTURE

THEME OF STUDY

- ◆ Architectural design and design research projects
- ◆ Communication, design & digital media
- ◆ History, theory & societal issues
- ◆ Professional practice
- ◆ Technology, environment & sustainability

PROFESSIONAL CAREERS

The Architecture stream aims to provide students with a sound professional and technological foundation to pursue higher professional degree in architecture.

Graduates are well sought-after by both government departments such as Housing Department and Architectural Services Department; and private companies such as architectural consultant firms, developers and contractors in the construction industry.



STREAM : SURVEYING

THEME OF STUDY

- ◆ Arbitration and dispute resolution
- ◆ Building control
- ◆ Construction technology
- ◆ Construction contract and project management
- ◆ Law for construction
- ◆ Property economics
- ◆ Project cost control / monitoring

PROFESSIONAL CAREERS

The Surveying stream aims at equipping students with excellent professional knowledge. For Building Surveying, the themes of study including the project planning, design, management and control.

While the Quantity Surveying study, it concentrates in the training of construction economic and control, preparation of the contract document and provide advice in contract disputes.

Bachelor of Engineering in Architectural Engineering

Hong Kong, as one of the densest cities in the world, has numerous modern buildings that need to provide safe, healthy and comfortable indoor environment for Hong Kong people. Architectural engineering consists of the design, manufacturing, installation, commissioning and maintenance of services systems in buildings.

This is a multidisciplinary major that aims to provide students with the academic background necessary for a professional architectural and building services engineer such as air-conditioning systems, electrical services, fire protection systems and pipe systems.



THEME OF STUDY

- ◆ Building services engineering
- ◆ Building energy
- ◆ Heating, ventilation and air conditioning
- ◆ Fire engineering
- ◆ Piped services
- ◆ Electrical services

PROFESSIONAL CAREERS

- ◆ Registered professional engineer in building services, energy and fire engineering disciplines
- ◆ Project manager
- ◆ Property manager
- ◆ Equipment supply engineer
- ◆ Site engineer
- ◆ Consulting engineer



Bachelor of Engineering in Civil Engineering

(with 2 streams in Structural Engineering/ Infrastructure and Smart City)

This major is fully accredited by the Hong Kong Institute of Engineers (HKIE) as a recognized degree for applying professional engineer qualification.

This major aims at equipping students with a solid foundation to work as a civil engineer. It covers a wide spectrum of areas, for example, construction technology and materials, engineering management, environment engineering, geotechnical engineering, green urbanism, hydraulic engineering, structural engineering and transportation engineering.

THEME OF STUDY

STREAM : STRUCTURAL ENGINEERING

- ◆ Structural analysis and design
- ◆ Sustainable and resilient building design
- ◆ Geotechnical engineering and foundation design
- ◆ Water resources and environmental engineering
- ◆ Transportation engineering
- ◆ Construction technology and management
- ◆ Hydraulics and hydrology

STREAM : INFRASTRUCTURE AND SMART CITY

- ◆ Structural analysis and design
- ◆ Geotechnical engineering and foundation design
- ◆ Water resources and environmental engineering
- ◆ Transportation engineering and smart mobility
- ◆ Construction technology and management
- ◆ Hydraulics and hydrology
- ◆ Smart buildings design, construction and operation

PROFESSIONAL CAREERS

STREAM : STRUCTURAL ENGINEERING

- ◆ Registered professional engineer in civil, structural, geotechnical and building
- ◆ Project manager
- ◆ Authorized person

STREAM : INFRASTRUCTURE AND SMART CITY

- ◆ Registered professional engineer in civil, geotechnical, building, logistics and transportation
- ◆ Project manager
- ◆ Authorized person
- ◆ Consulting engineer



@ All first-year entry applicants will have a common curriculum in the first year and will enter a major (option: BEng Architectural Engineering, BEng Civil Engineering, BSc Architecture and Surveying) after one year of study. The top 40% of students* will have a free choice of majors offered by the Department. The other 60% of students will be allocated a major within the Department, subject to the availability of places and the selection criteria set by individual majors.

based on CGPA with no failed grades, completion of at least 30 credit units including College/ Department required courses and no academic dishonesty record for the year.

