



Department of
Materials Science and Engineering
香港城市大學
City University of Hong Kong

MAKE SOMETHING EXTRAORDINARY

DEPARTMENT OF MATERIALS SCIENCE AND ENGINEERING

Bachelor of Engineering in Materials Science and Engineering (MSE)

Touch "M" "S" "E" in the cover page. Do you find something special?

The difference between "M" "S" "E" in the cover page is the coating. With different materials applied on the cover page, the texture and reflection of the words become different on the same paper!

With the use of materials science and engineering, we are able to unlock various possibilities of different objects, like waterproof clothings with water repellent nanotechnology, composite materials to create products with the best of both or even more worlds like fiberglass.

The comfort and convenience of modern life are intimately associated with the discovery, manipulation and selection of natural and synthetic materials. Advancement in materials science and engineering has led to better understanding and manipulation of materials, which is a prerequisite for future technological progress.

Join us to **Make Something Extraordinary!**

**HKDSE
Students**



**Admission
Requirements**

Facts about MSE - Number ONE in Hong Kong!

NO.1

Best Global Universities in Nanoscience & Nanotechnology in Hong Kong

#12 Globally
US News & World
Report 2023

NO.1

Best Global Universities in Materials Science in Hong Kong

#15 Globally
US News & World
Report 2023

NO.1

Global Ranking of Academic Subjects in Nanoscience and Nanotechnology in Hong Kong

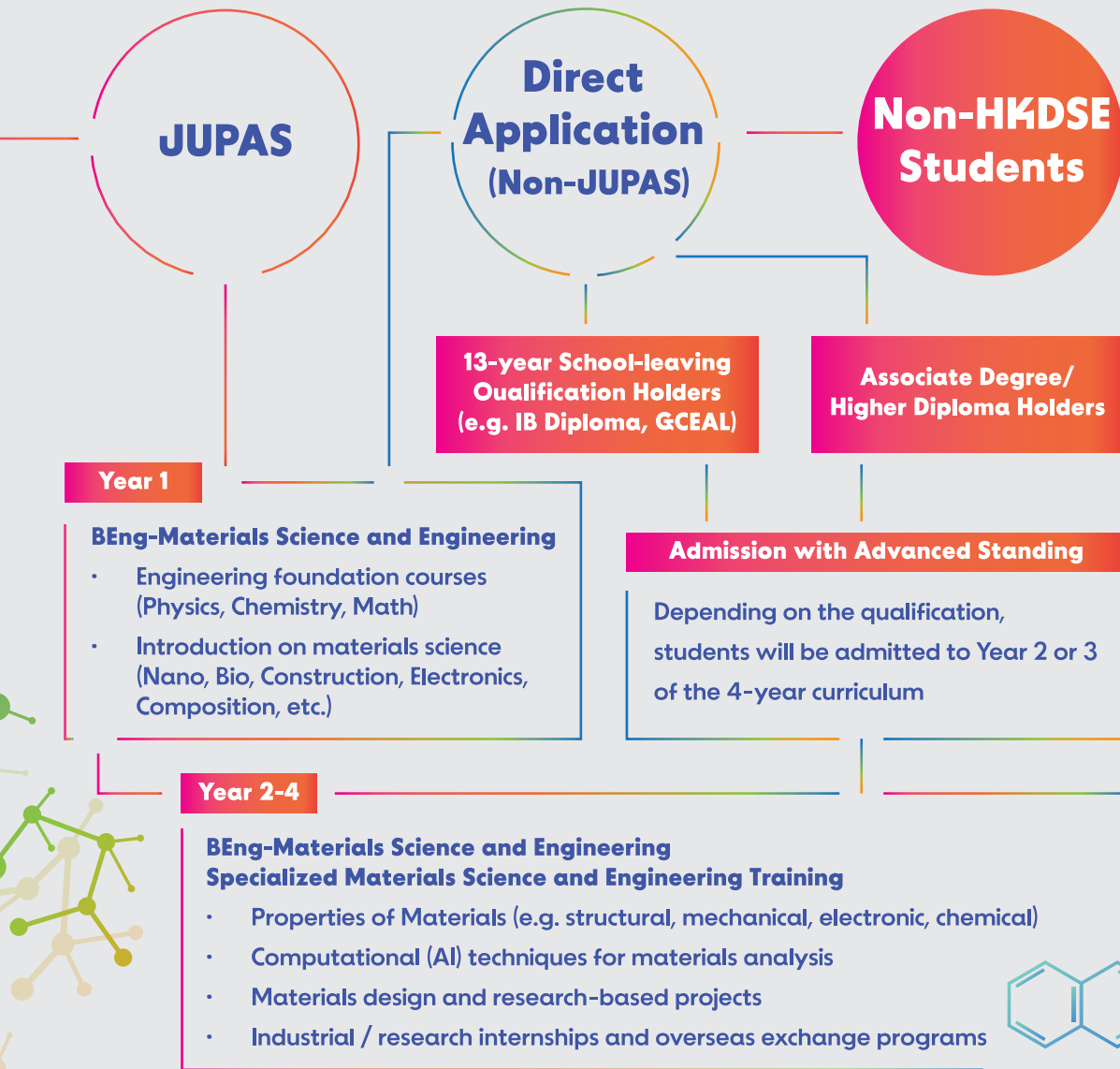
#17 Globally
Shanghai
Ranking 2023

NO.1

Global Ranking of Academic Subjects in Metallurgical Engineering in Hong Kong

#10 Globally
Shanghai
Ranking 2023

Admission Routes and requirements



**Touch
M, S, E**

- Satisfy the Minimum Entrance Requirements of the University with a Science or Engineering Background; **OR**
- Associate Degree or Higher Diplome Holder in a relevant discipline or other technical qualifications; **OR**
- 13-year School-leaving Qualification Holder (e.g. IB Diploma, GCEAL)

For further details of entrance requirements and application procedures, please visit the website of our Admission Office:

www.admo.cityu.edu.hk/

Our Graduates and Career Prospects

NO.1

Global Ranking of Academic Subjects in Materials Science & Engineering in Hong Kong

#21 Globally
Shanghai
Ranking 2023



Building and Constructions Industries:
AECOM, ARUP, CSCECHK



Government Research Institutes:
NAMI, HKPC



Start-up High Tech Companies:
Science Park, Cyberport



Advanced Research and Studies:
UK, US, JAPAN



Connect with us

✉ mse@cityu.edu.hk

📷 [Cityumse](#)

☎ +852 3442-2985

📘 [CityU MSE Dept](#)

<https://www.cityu.edu.hk/mse/>



Department of
Materials Science and Engineering

香港城市大學
City University of Hong Kong